

Lecture Facilitator

Wednesday, March 04, 2009

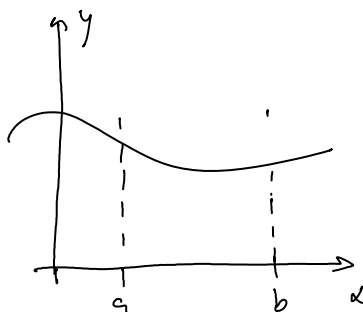
16:29

What is inquiry-based teaching?

→ how do you do it?

→ use real data

Interesting example of calculating the area under the curve?



how do we do this?

→ estimate?

→ estimate w/ what?

→ Δ 's?

→ σ 's?

→ Γ 's?

→ how do we estimate?

Objectives vs Goals



Behavior



Observable



"Understanding"



Not really observable

Questions re the peer teaching?

→ how do we do content knowledge in 15 minutes?

→ can we talk through the plan?

→ not very engaging

→ do it in the small groups first

Lecture Facilitators:

→ use TAs to help deal with large lecture classes

Some questions will be posted on Blackboard

